

TOUCH-FREE INFRARED SWITCHES

SBI SERIES



Touch-free switches for high-traffic public environments. Safe, distant activation of devices, light switches, door controls, sanitary dispensers, elevators, exit switches and more. Easily installed, cost-effective, hygienic.

Specifications

Sensor type	Infrared
Detection range	5-80cm / 2-32" adjustable
Housing materials	STS 316, STS 304, aluminum, chrome-plated brass
Functions	On/off, momentary, pro-longed
Visual feedback	Dot LED in sensor housing
Programmable	Field programmable (optional)
Connectivity	Ability to connect IOT module (Bluetooth, WiFi)

Product types

Exit switch	IR ES 28
Smart switch	IR SS 28
Sanitary applications	IR SA 28

- Programmed for faucets, urinals, toilets & showers
- Ability to operate any type of solenoid valve

Electrical data

Operating voltage	6 - 24 V DC
Switching voltage	3V-24V DC (AC optional)
Switching power	Up to 2A standard (optional high current by relay)
Switching output	Voltage out, open collector or dry contact
Operating current	25 μ A in standby mode

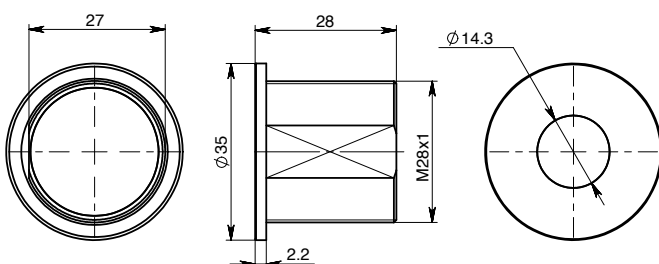
Mechanical data

Operating cycles	> 1,000,000
Housing mounting diameter	22 mm or 28 mm
Wiring	Standard wires (special connectors are available upon request)

Environmental data

Operating temperature	-20C to +75C / -4°F-167°F
Storage temperature	-40C to +80C / -40°F-180°F
IP protection	IP67

Technical Drawing



TOUCH-FREE INFRARED SWITCHES

Type SBI

