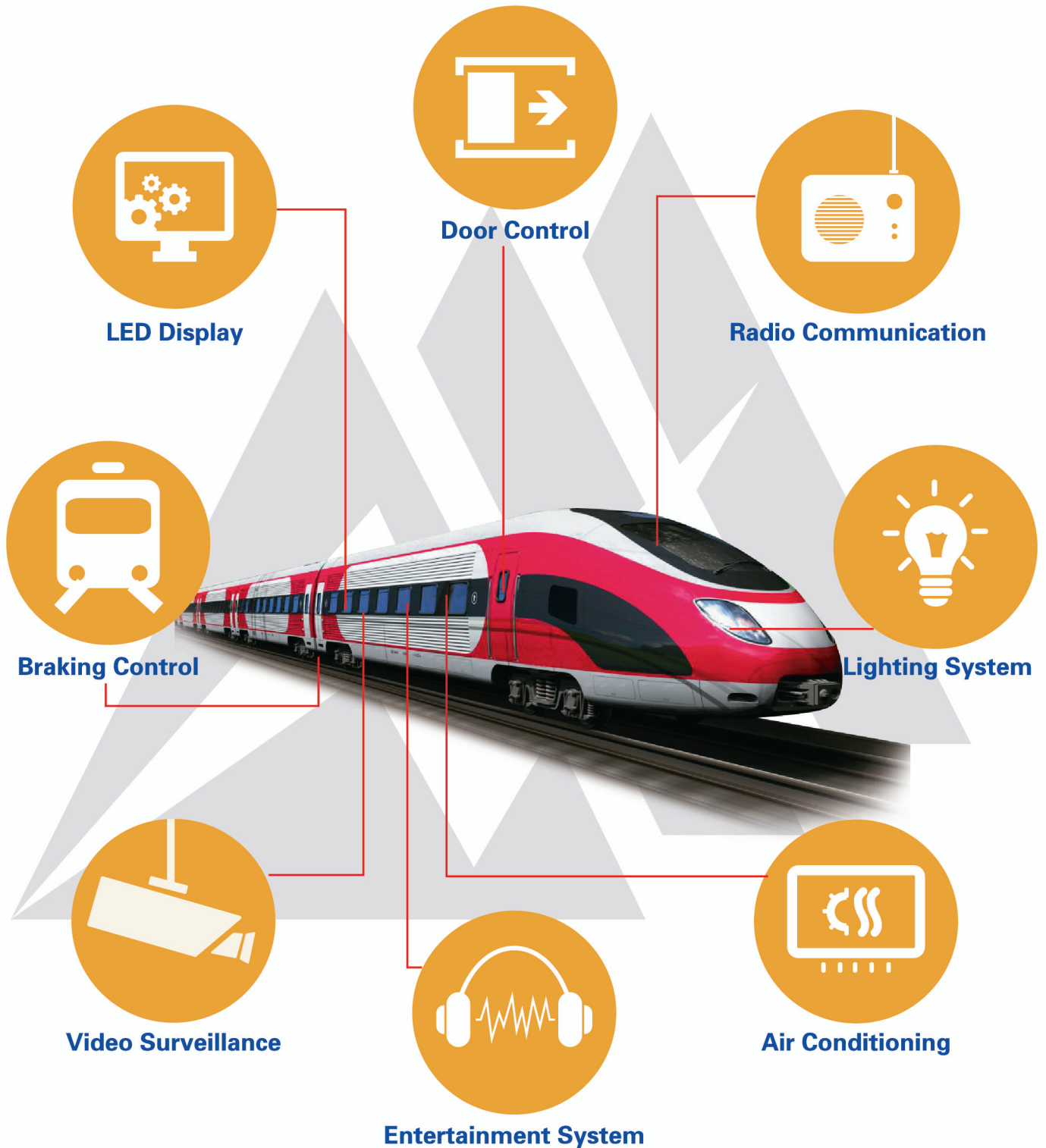
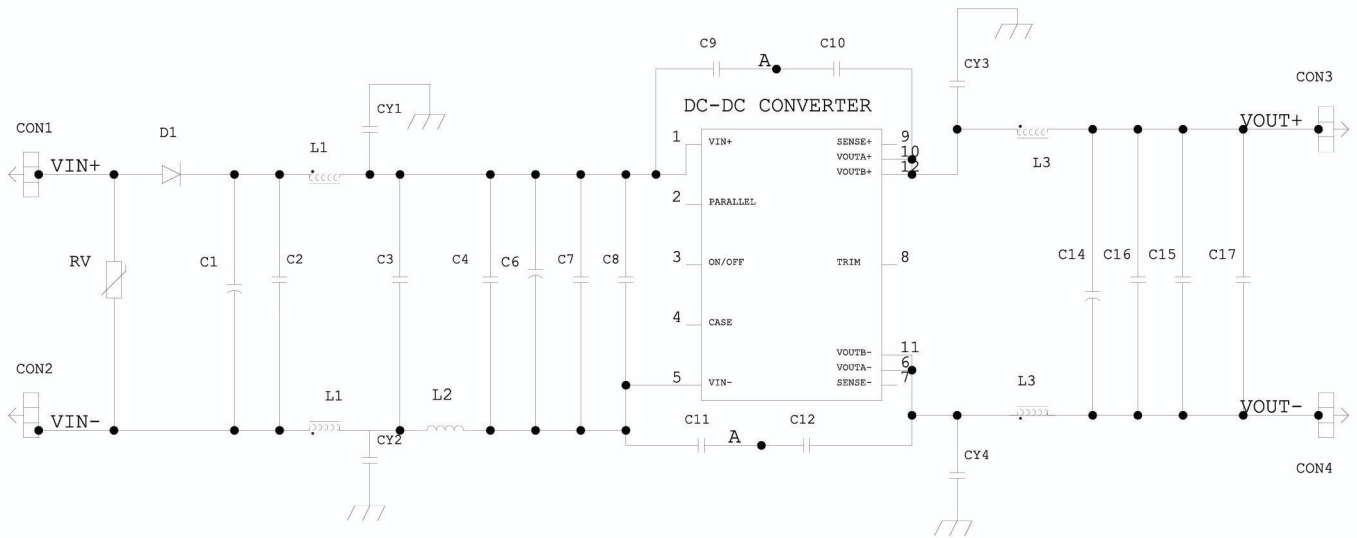


# DC-DC Power Solutions for Railway



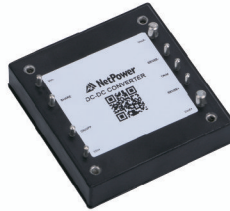


Typical Application Circuit

**Quarter  
Brick**



**Half  
Brick**



**Full  
Brick**



## Features:

- ◆ Output voltage from 5V to 56V, power up to 800W
- ◆ 16-160V, 34-160V, 66-160V DC input ranges
- ◆ 3000VAC input to output isolation
- ◆ Excellent thermal performance
- ◆ Industry standard footprint
- ◆ Designed to meet EN50155

